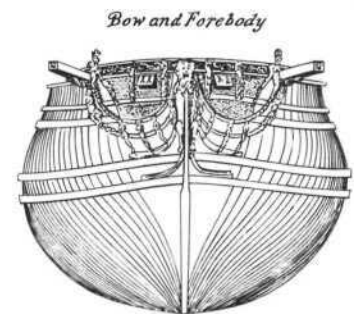
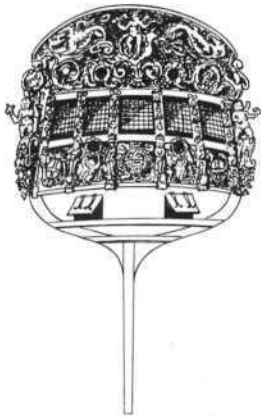
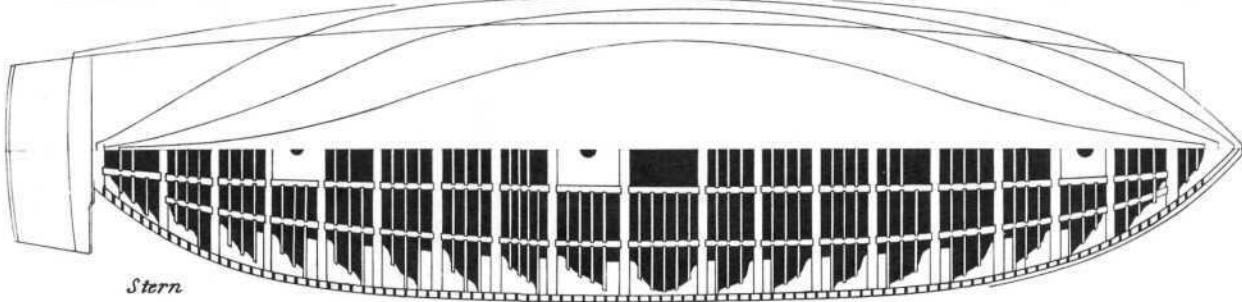
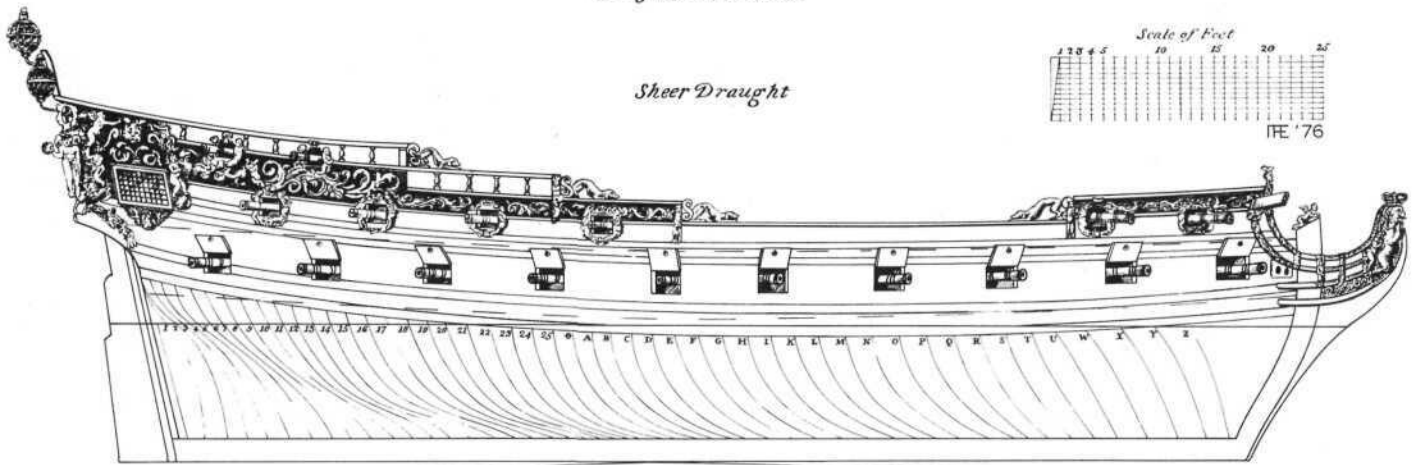
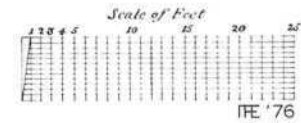


*A Fifth Rate 1684**Sheer Draught*

## A FIFTH RATE-1684

### After Keltridge

This drawing reproduces a presentation draught after Charnock based on a plan by Keltridge. Though it is possible to make a faired drawing from it, in its present state it represents an idea only, not a plan from which a vessel or a model could be constructed.

The illustration has, however, several features which are of interest. First, and most important, it illustrates the development of decoration in the last quarter of the 17th century. The transom has the Stuart arms, mythical sea horses, and cherubim, all held together with floral elements.

The carving along the sheer continues the floral motives, while cherubim and a lion's head decorate the quarter gallery. The hances are playful greyhounds ready to pounce. The hair rail bracket ends in a bust, while the figurehead is

a crouched lion. The wreaths for the upper deck gun ports are formed by encircling cherubim.

At the stem are three round lanterns, each a closed hexagon in shape. The center lantern is the largest of the three and would be situated on the transom center line, while the two smaller lanterns would be placed at each side on the quarters of the transom.

The vessel's lines are formed for moderate speed and she appears to be able to carry her guns without difficulty. She has an easy entrance and a short run.

The gun deck framing plan is also of interest. It indicates the connection of beams, carlings, and the lodge knees required to tie the beams to the sides of the hull.

According to Charnock this plan represents a 5th Rate of the largest dimensions. She mounts 20 guns on the gun deck, plus smaller guns both fore and aft on the main deck, as well as four guns on the quarter deck. Her length, measured from the rabbet of the stem to the rabbet of the stern post, is 103' - 9". (From NRG files.)